

Authorised to
print.

K. Corrie
20/06/2011

entokil

DIRECTIONS FOR USE: Shake well before use. For best results spray from a distance of 30 centimetres. Ants and crawling insects can be dealt with most effectively by spraying directly onto them when they are exposed on surfaces to achieve rapid knockdown and kill.

Insectrol Insect Killer can also be sprayed into cracks and crevices where insect activity is seen to give long lasting insecticidal protection. Re-spray surfaces as necessary. For bed-bugs and fleas, spray infested areas lightly. This product is not for use on bed linen.

STATUTORY CONDITIONS OF APPROVAL RELATING TO USE:

FOR USE ONLY AS AN AMATEUR INSECTICIDE. Application rate: Spray from a distance of 30cm directly onto insects or onto surfaces where insects walk, into cracks and crevices and other insect hideaways. Do not breathe spray. DO NOT CONTAMINATE FOODSTUFFS, EATING UTENSILS OR FOOD CONTACT SURFACES. This material and its container must be disposed of in a safe way. Avoid contact with skin. Do not empty into drains. Use only in well-ventilated areas. REMOVE OR COVER ALL FISH TANKS AND BOWLS before application. Do not contaminate ground, waterbodies or watercourses with chemicals or used container. DO NOT APPLY DIRECTLY TO ANIMALS. EXCLUDE ANIMALS DURING APPLICATION. DO NOT APPLY TO CLOTHING. SPRAY ONLY ONTO SURFACES. Users must comply in full with all their legal responsibilities under the Control of Pesticides Regulations 1986 (as amended), including complying with all Conditions of Approval.

READ ALL PRECAUTIONS BEFORE USE.

HSE 8459

PRECAUTIONS:

PCS 95177

To avoid risks to man and the environment, comply with the instructions for use. *WASH HANDS AND EXPOSED SKIN before meals and after use. *KEEP IN A SAFE PLACE. *Keep out of the reach of children. *WASH ANY CONTAMINATION from skin or eyes immediately. *UNTIL DRY, TREATED SURFACES CAN POSE A FIRE RISK. *DO NOT HANDLE TREATED FABRICS UNTIL DRY AND AIR THOROUGHLY BEFORE USE. *Keep away from food, drink and animal feeding stuffs. *If swallowed, seek medical advice immediately and show this container or label.

WARNING: *Pressurised container: protect from sunlight and do not expose to temperatures exceeding 50°C. Do not pierce or burn even after use. *Keep away from sources of ignition - No smoking. *Do not spray on a naked flame, electrical equipment or any incandescent material. **ADVICE:** Always apply in well-ventilated areas. Ventilate treated areas thoroughly after application. Do not recover treated areas until completely dry. Avoid heavy spraying on fabrics, furs, foam-backed carpets, plastics, synthetic tiles and polished surfaces. We recommend spraying onto a small discreet area first to test for reaction on sensitive fabrics.

THIS PRODUCT IS APPROVED UNDER THE CONTROL OF PESTICIDES REGULATIONS 1986 (AS AMENDED) FOR USE AS DIRECTED.

Note to Doctor: For further information contact your local National Poisons Information Centre. Contains permethrin. May produce an allergic reaction. Contains Naphtha (petroleum).

Active Ingredients:

PERMETHRIN: 0.46% w/w
d-ALLELETRIN: 0.13% w/w

173g/250ml e

Rentokil Initial Supplies
Liverpool, L33 7SR
Enquiries: 0151 548 5050
products@rentokil-initial.com
www.rentokilproducts.com
Emergency line: 01342 833022

SOLVENT
ABUSE
CAN KILL
INSTANTLY

335

111010-342C4



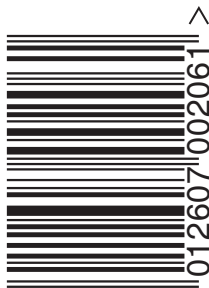
EXTREMELY
FLAMMABLE



DANGEROUS
FOR THE
ENVIRONMENT

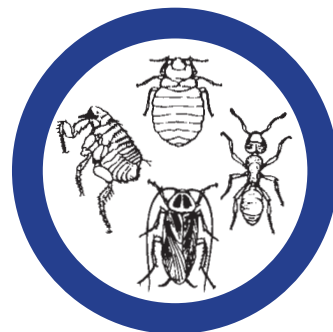
VERY TOXIC

TO AQUATIC ORGANISMS,
MAY CAUSE LONG-TERM
ADVERSE EFFECTS IN THE
AQUATIC ENVIRONMENT



5 012607 002061

INSECTROL INSECT KILLER



- Kills fleas, ants, cockroaches, bedbugs, earwigs, beetles, woodlice and other insects.
- Fast effective control

LONG LASTING