

 **BASF**
The Chemical Company

GOLIATH® GEL

See enclosed flyer for full particulars

Reg. No. L 5763; N-AR 0873 Act no 36 of 1947

IRAC INSECTICIDE GROUP CODE 2 B

A ready to use insecticidal gel-type bait for the control of cockroaches in public hygiene practice.

Active ingredient: Fipronil (phenyl pyrazole) 0,5 g / kg

FOR PROFESSIONAL USE ONLY.

Only for sale to and use by registered pest control officers.

Reg. Nr. L 5763 Wet nr 36 van 1947

IRAC INSEKODDERGROEPKODE 2 B

'n Gereed-vir-gebruik gel-tipe insekdodende lokaas vir die beheer van kakkerlakke in publieke higiëne.

Aktiewe bestanddeel: Fipronil (feniel pirasool) 0,5 g / kg

SLEGS VIR PROFESSIONELE GEBRUIK: Net vir verkoop aan en gebruik deur geregistreerde plaagbeheerbeamptes.

Registered by / Geregistreer deur:

BASF South Africa (Pty) Ltd. / BASF Suid-Afrika (Edms) Bpk.

Co. Reg. No. / Mpy. Reg. Nr. 66/10235/07

P.O. Box / Posbus 2801, Halfway House / Halfweghuis 1685

Manufactured and formulated by / Vervaardig en geformuleer deur:

BASF Agro BV Arnhem (NL), Waedenswil Branch,

Steinacherstrasse 101, CH-8820 Waedenswil, Switzerland

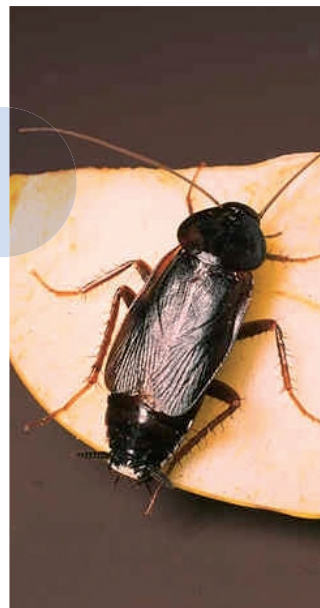
EMERGENCY NUMBER / NOODNOMMER: 082 893 3643

App. code 06 / 05 / 03

4 x 35 g

© = Registered Trademark of BASF /
Geregistreerde handelsmerk van BASF

81036223ZA0098



Sien ingeslote pamflet vir volle besonderhede.



BASF

GOLIATH™ Gel

Reg. no.: L 5763 Act no 36 of 1947

Fipronil (phenyl pyrazole)..... 0,5 g / kg

WARNINGS

- Handle with care.
- Harmful if swallowed.
- Store in the original box in a cool place away from food and animal feed.
- Keep out of reach of children, uninformed people and animals.

PRECAUTIONS

- Prevent skin and eye contact. In case of accidental skin or eye contact wash with soap and water and rinse eyes thoroughly with clean water.
- Only apply out of the reach of children.
- Do not eat, drink or smoke whilst applying.
- Wash hands after application.
- Do not contaminate food processing surfaces with the gel. If **GOLIATH™ GEL** contaminates non-target surfaces during application, remove the gel with a damp paper towel and throw away in a refuse bin. Clean area thoroughly.
- When empty, dispose of the cartridges safely.
- Do not attempt to open or re-fill the cartridge.
- Do not re-use the cartridge for any other purpose.
- Prevent contamination of food, feed, drinking water and eating utensils.

DIRECTIONS FOR USE

USE ONLY AS DIRECTED

General directions

GOLIATH™ GEL is effective against the nymphs and adults of the German cockroach (*Blattella germanica*) and the American cockroach (*Periplanata americana*).

GOLIATH™ GEL may be used to control cockroaches in:

- Domestic premises (including kitchens).
- Food handling areas (i.e. for food processing, storage and preparation) such as food manufacturing premises, commercial kitchens, restaurants, food stores, warehouses, retail outlets etc.
- Public buildings such as hotels, hospitals, prisons, schools, churches, theatres etc.
- Commercial and industrial premises such as factories, shops, workshops, aircraft, vehicles, railway stock and ships.

Application

GOLIATH™ GEL is most effective when placed within or close to cockroach harbourages, foraging and feeding areas. These are typically areas that are dark, warm, damp and remain undisturbed e.g. behind refrigerators and in electrical equipment. Locate such areas by appropriate techniques, such as inspection or by trapping with sticky traps. Search for empty egg cases, cockroach faeces and cast skins. For the best results the area to be treated should be cleaned and tidied before treatment, paying particular attention to the removal of alternative food sources.

GOLIATH™ GEL cartridges are designed to be used with the BaitGun® applicator. Lock the **GOLIATH™ GEL** cartridge into the BaitGun® and attach the appropriate application tip to the cartridge. Refer to the manufacturer's instructions for directions on the use of the BaitGun®.

GOLIATH™ GEL should be applied throughout the infested area as small spots. Spots of gel should be applied in dark out-of-sight locations in cracks, crevices, behind cupboards and shelves, under kitchen appliances, in electrical control boxes, voids and ducting and under bathroom fixtures etc. Do not apply **GOLIATH™ GEL** where it will become submersed or likely to be removed by routine cleaning. Do not spray other insecticides on or around **GOLIATH™ GEL** spots or place spots on recently treated surfaces, as this will contaminate the **GOLIATH™ GEL** and may discourage cockroaches from feeding on it.

GOLIATH™ GEL is very attractive to cockroaches and feeding begins soon after placement of the gel. Typically cockroaches will die a few hours after a single feed on **GOLIATH™ GEL**. In infested premises, dead cockroaches will normally be seen within 24 hours of treatment.

Treated areas should be re-inspected after 1 - 2 weeks. Where initial infestation was severe a second **GOLIATH™ GEL** application may be required if the first treatment has been entirely consumed and live cockroaches are still present.

Rate of application

In cases of severe infestation and in areas that are particularly dirty or cluttered or where alternative sources of food cannot be entirely eliminated, use the higher rate of application.

Normal rate

| | |
|--------------------|---|
| German cockroach | one spot of 0,03 g gel per square metre. |
| American cockroach | two spots of 0,03 g gel per square metre. |

High rate

| | |
|--------------------|---|
| German cockroach | two spots of 0,03 g gel per square metre. |
| American cockroach | three spots of 0,03 g gel per square metre. |

A spot of 0,03 g is approximately 3 - 4 mm in diameter.

The right number of spots must be placed per square metre of floor space (i.e. in a building of 100 m² floor space a total of 100 spots must be placed for the control of German cockroaches at the normal rate). This does not, however, mean that the spots must be placed evenly throughout the treated premises. Spots can be concentrated at cockroach harbourages and in other areas mentioned above. Cockroaches can often be found high up against ceilings and against walls if suitable shelter etc. is available there.

BASF SA (PTY) acknowledges the following registered trademark:

BaitGun® is the trademark of EFD Inc., U.S.A

TM = Trade mark of BASF / Handelsmerk van BASF

GOLIATH™ Gel

Reg. nr.: L 5763 Wet nr 36 van 1947

Fipronil (feniel pirasool)..... 0,5 g / kg

WAARSKUWINGS

- Hanteer versigtig.
- Skadelik indien ingesluk word.
- Berg in die oorspronklike houer in 'n koel plek weg van voedsel en dierevoer.
- Hou buite bereik van kinders, oningeligte persone en diere.

VOORSORGMATREËLS

- Voorkom aanraking met vel en oë. In geval van toevallige aanraking met vel of oë was met seep en water en spoel oë deeglik met skoon water.
- Plaas die lokaas slegs buite die bereik van kinders uit.
- Moenie eet, drink of rook tydens toediening nie.
- Was hande na toediening.
- Moenie voedselverwerkingsoppervlakke met die gel besmet nie. As nie-teiken areas met **GOLIATH™ GEL** besmet word tydens toediening, verwyder die gel met 'n klam papierhanddoek en gooi dit weg in 'n vullisdrom. Maak die area deeglik skoon.
- Wanneer leeg, raak op 'n veilige manier ontslae van die buis.
- Moenie probeer om die buis oop te maak of om dit te hervul nie.
- Moet buis vir geen ander doel hergebruik nie.
- Voorkom besoedeling van voedsel, voer, drinkwater en eetgerei.

GEBRUIKSAANWYSINGS:

GEBRUIK SLEGS SOOS VOORGESKRYF

Algemene aanwysings

GOLIATH™ GEL beheer die nimfe en volwassenes van die Duitse kakkerlak (*Blattella germanica*) en die Amerikaanse kakkerlak (*Periplanata americana*).

GOLIATH™ GEL kan gebruik word vir die beheer van kakkerlakke in:

- Huishoudelike persele (insluitende kombuise).
- Plekke waar voedsel hanteer word (m.a.w. waar voedsel verwerk, geberg of voorberei word) soos in voedselverwerkingsaanlegte, kommersiële kombuise, restaurante, voedselstore, pakhuisse, kleinhandelwinkels ens.
- Openbare geboue soos hotelle, hospitale, gevangnisse, skole, kerke, teaters ens.
- Kommersiële en industriële persele soos fabriek, winkels, werkswinkels, vliegtuie, voertuie, spoorwegtrokke en skepe.

Toediening

GOLIATH™ GEL is mees effektief wanneer dit in of naby kakkerlakskuilplekke en voedingsareas geplaas word. Hierdie areas is tipies donker, warm en vogtige plekke wat nie versteur word nie bv. agter yskaste en binne elektriese toebehore. Sulke plekke moet geïdentifiseer word deur deeglike inspeksie of die gebruik van taai lokvalle. Soek vir leë eiersakke, kakkerlakmis en vervellings. Vir die beste resultate moet die area wat behandel gaan word vooraf skoonmaak word. Veral alternatiewe voedselbronne moet verkieslik verwyder word.

Die **GOLIATH™ GEL** buis is ontwerp om saam met die BaitGun® aanwender gebruik te word. Sit die **GOLIATH™ GEL** buis in die BaitGun® aanwender en plaas die toepaslike aanwendingspunt aan die buis. Lees die vervaardiger se instruksies aangaande die gebruik van die Bait Gun®.

GOLIATH™ GEL moet dwarsdeur die besmette perseel in klein kolletjies geplaas word. Kolle gel moet buite sig in donker plekke soos krake en gate, agter kaste en rakke, onder kombuistoehore, in elektriesekabelborde, in en om elektrieseleidings, onder badkamertoehore ens. aangewend word. Moenie **GOLIATH™ GEL** aanwend waar dit onder water gedompel kan word, of waar dit deur gewone skoonmaakprosesse verwyder kan word nie. Moenie ander insekdoders om of oor die **GOLIATH™ GEL** kolle spuit nie of kolle op oppervlakke wat onlangs met insekdoders behandel is plaas nie. Dit sal die **GOLIATH™ GEL** besmet en mag kakkerlakke ontmoedig om daaraan te vreet.

GOLIATH™ GEL is baie aanloklik vir kakkerlakke en voeding op die lokaas begin baie gou na plasing van die lokaas. Gewoonlik vrek kakkerlakke binne enkele ure nadat hulle **GOLIATH™ GEL** gevreet het. In besmette persele sal doolie kakkerlakke gewoonlik 24 uur na toediening sigbaar wees.

Behandelde areas moet na 1 - 2 weke weer geïnspekteer word. Waar die besmetting erg was, mag 'n tweede toediening van **GOLIATH™ GEL** nodig wees indien al die vorige gel opgevreet is, en lewendige kakkerlakke nog steeds teenwoordig is.

Toedieningshoeveelheid

In gevalle van swaar besmetting of in areas wat baie vuil is of waar alternatiewe bronne van voedsel nie uitgesluit kan word nie, moet die hoër toedieningshoeveelheid gebruik word.

Normale toedieningshoeveelheid

| | |
|-----------------------|--|
| Duitse kakkerlak | een kol van 0,03 g gel per vierkante meter. |
| Amerikaanse kakkerlak | twee kolle van 0,03 g gel per vierkante meter. |

Hoër toedieningshoeveelheid

| | |
|-----------------------|--|
| Duitse kakkerlak | twee kolle van 0,03 g gel per vierkante meter. |
| Amerikaanse kakkerlak | drie kolle van 0,03 g gel per vierkante meter. |

'n Kol van 0,03 g is omtrent 3 - 4 mm in deursnee.

Die regte hoeveelheid kolle moet per vierkante meter vloerspasie geplaas word (m.a.w. in 'n gebou van 100 m² vloerspasie moet 100 kolle vir Duitse kakkerlakbeheer teen die normale toedieningshoeveelheid geplaas word). Dit beteken nie noodwendig dat kolle eweredig deur die perseel geplaas moet word nie. Kolle kan gekonsentreer word waar die kakkerlakke skuiling soek en in plekke soos hierbo beskryf. Kakkerlakke kan baie keer ook hoog op teen plafonne en mure gevind word as geskikte skuiling ens. op sulke plekke beskikbaar is.

BASF SA (PTY) LTD erken die volgende handelsmerk:

BaitGun® is die geregistreerde handelsmerk van EFD Inc., U.S.A.

37037 0ZA 0073